

OXYPLATE 9-12

Disc air diffusers

Description and applications

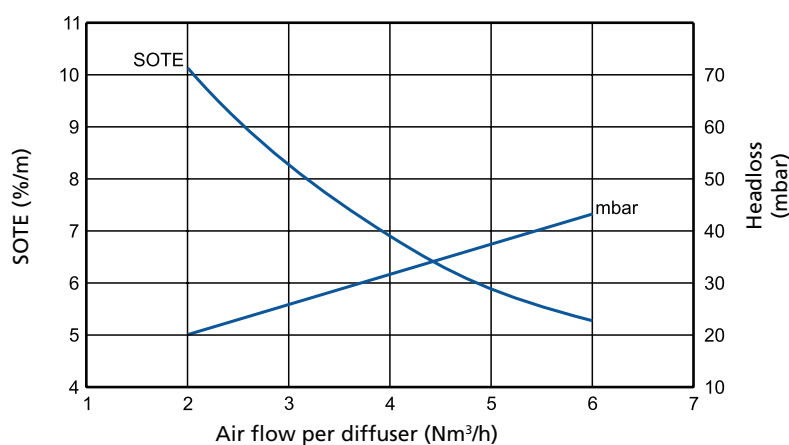
Disc diffusers having elastomer membrane with tiny holes for application in waste water treatment processes in reactors with continuous or intermittent aeration, especially recommended for high-efficiency permanent installations. The quality, design and membrane hole size ensure unbeatable efficiency in terms of the ideal oxygen transfer-headloss balance.



All product images are indicative only

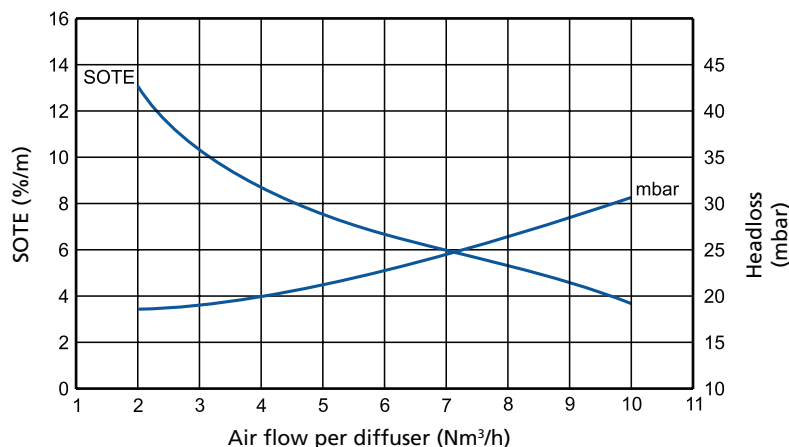
Performance

OXYPLATE 9



EPDM LP membrane, fine bubbles
Oxygen transfer according with ATV M209
Density 6.5%

OXYPLATE 12



EPDM LP membrane, fine bubbles
Oxygen transfer according with ATV M209
Density 5.3%

Technical characteristics

		OXYPLATE 9"	OXYPLATE 12"
External diameter	mm	270	340
Min. operating flow rate	Nm ³ /h	2	2
Max. operating flow rate	Nm ³ /h	6	10
Max overload flow *	Nm ³ /h	10	15
Active surface area	m ²	0,038	0,06
Membrane thickness	mm	2 ± 0.15	2 ± 0.15

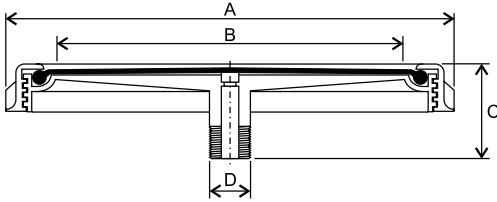
Data with fine-bubble EPDM LP membrane

* No more than 10 min/day for membrane cleaning, tests, etc.

Construction materials

	OXYPLATE 9"	OXYPLATE 12"
Diffuser body	PP GF 30	PP GF 30
Ring-nut	PP GF 30	PP GF 30
Membrane	EPDM LP / SILICONE	EPDM LP

Overall dimensions and weights



	A	B	C	D	E	Kg
OXYPLATE 9"	270	220	76	3/4 NPT m	32	0.7
OXYPLATE 12"	340	310	76	3/4 NPT m	32	1.2

Dimensions in mm

All weights and dimensions are indicative only

Accessories and components

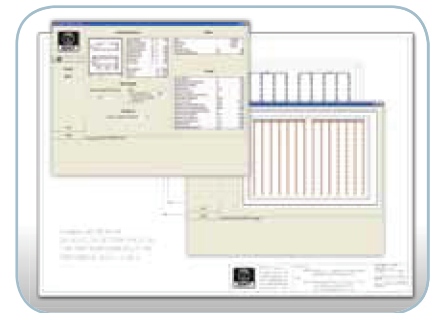
ZENIT is able to design and build complete aeration systems including disc-shaped diffusers and preassembled PVC air distribution networks.

The high degree of standardization, combined with the use of special components manufactured by ZENIT itself, allows the construction of simple, reliable, quick-to-install systems which are surprisingly inexpensive in spite of the use of top-quality materials such as PVC PN10 pipelines and stainless steel supports.



To facilitate the installation and servicing of its diffuser systems, Zenit has produced a series of tools that make every procedure quick and effective.

The use of dedicated software packages makes system design a quick operation, from the process to the optimal layout, through to cost analysis and generation of the bill of materials.



Installations

Preassembled systems are designed for quick, easy installation even by relatively unskilled staff, following the detailed instructions provided.

All connections are made by means of special self-aligning flanges with integral seal.

The supports are easily height-adjustable (up to 20 cm) to allow levelling even with uneven or slightly sloping tank bottoms.

